

Ancillary Sports Works

DW Clark have a comprehensive, ever growing fleet of specialist equipment which enables them to complete a wide range of projects efficiently and to a guaranteed quality standard.

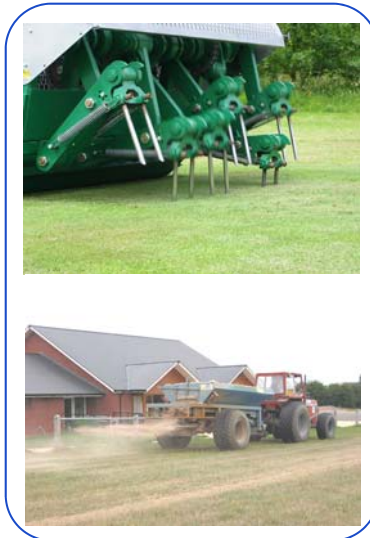
"DW Clark Drainage LTD are professional about their job, the jobs are very clean and tidy and the workers are extremely helpful".

**Malcolm Grout, Head Greenkeeper,
The Welcombe Golf Course, Stratford-Upon-Avon**



Water features and carpet paths created at the Welcombe Golf Course in Stratford-Upon-Avon.

*Top: Vertidrainning a golf course
Bottom: Sand spreading at Shipston
On Stour Rugby Club*



Their on going staff training policy and experience gained over many years enables them to tackle an infinite variety of diverse projects with confidence.

Below: Installation of ducting for TV cables using AFT100 trencher at Cheltenham Race Course.



"The racecourse has used D.W.Clark for many years as drainage consultants and they have always carried out the job as asked. The site has always been left clean and tidy. Furthermore a thorough job is always carried out and they go the extra yard to make sure the job is done right."

**John Nicholson, Head Groundsman,
Cheltenham Racecourse**

If you are interested in the professional services available from DW Clark and would like to know more, then please telephone Jim Wheeler on 01608 685800 or email info@dwclarkdrainageltd.co.uk

D/W Clark

DRAINAGE LTD

LDCA
LAND DRAINAGE • SPORTS TURF • WATER MANAGEMENT

